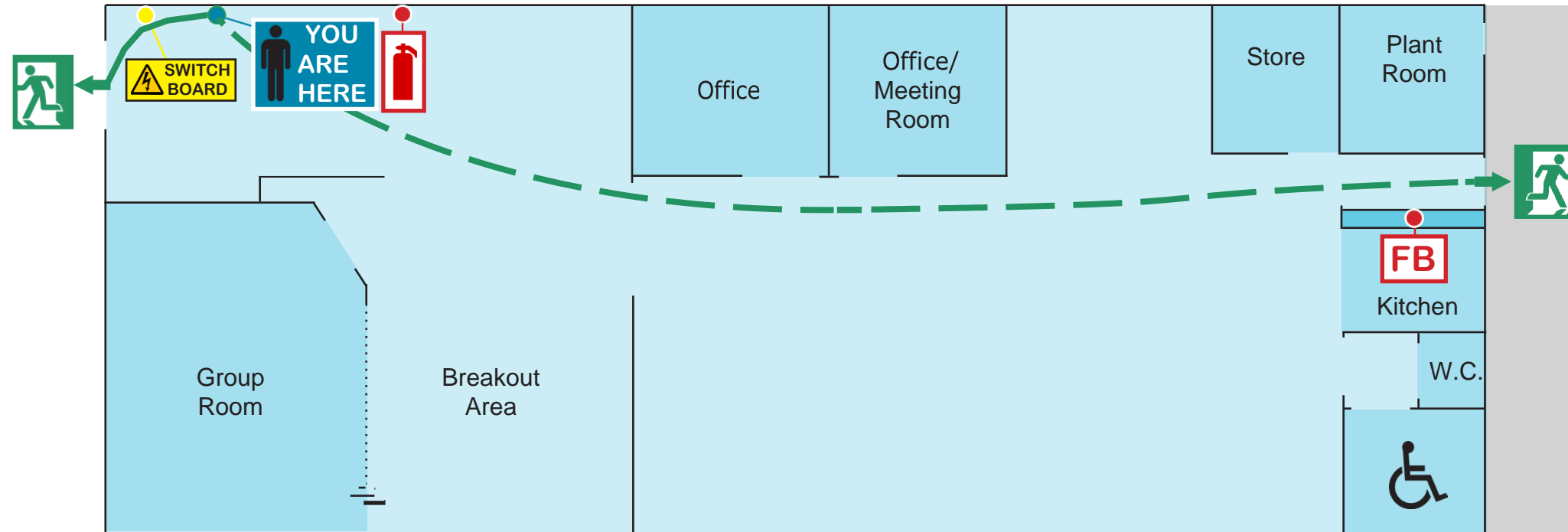


# EVACUATION DIAGRAM



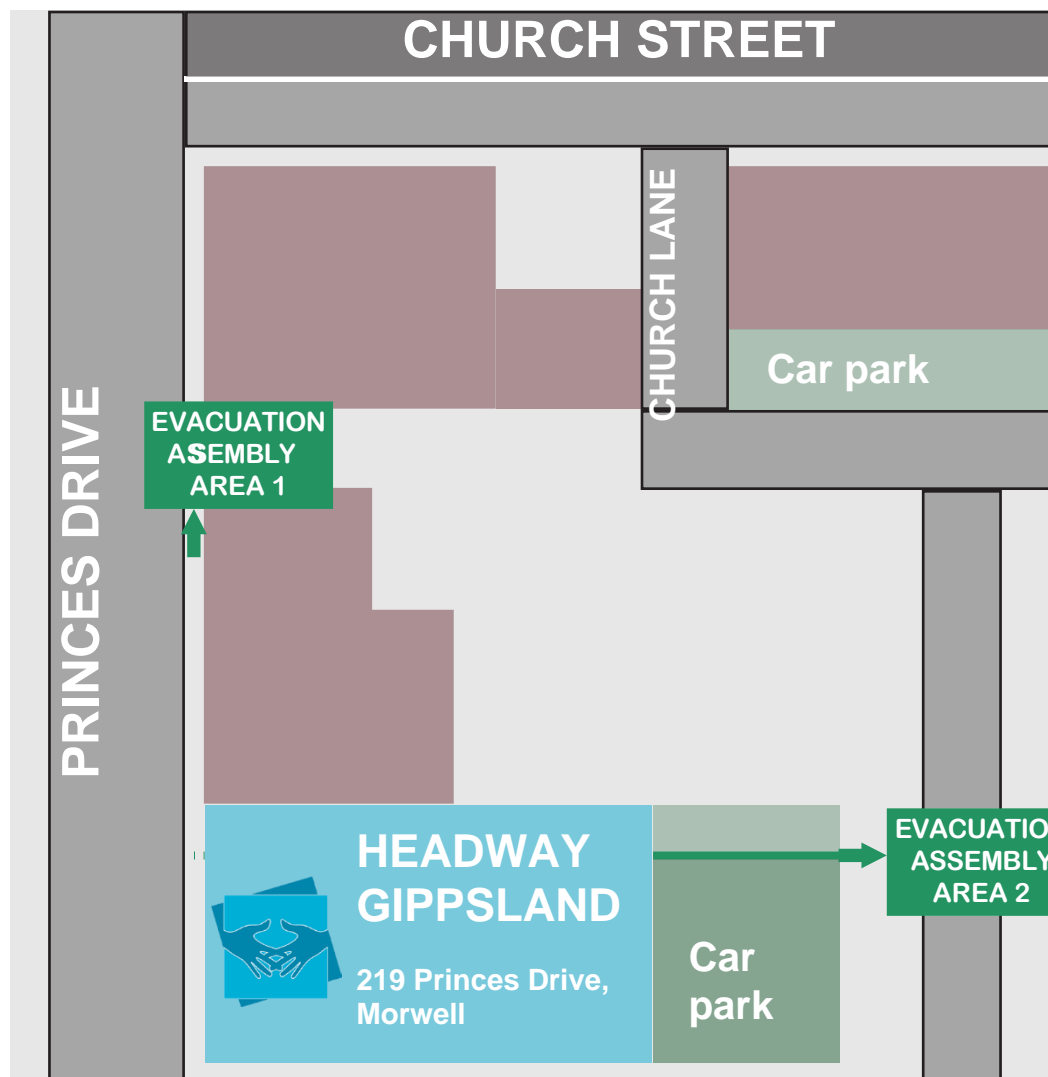
**Headway Gippsland**  
219 Princes Drive  
Morwell, VIC 3840



## EMERGENCY PROCEDURES

- 1** RAISE THE ALARM, NOTIFY NEARBY OCCUPANTS  
**PHONE 000**
- 2** ASSIST ANY PERSON IN DANGER  
**IF IT IS SAFE TO DO SO**
- 3** MOVE TO THE NEAREST SAFE  
**EVACUATION ASSEMBLY AREA**
- 4** REMAIN AT THE  
**EVACUATION ASSEMBLY AREA**  
REPORT ANYONE MISSING TO THE CHIEF WARDEN OR RESPONDING EMERGENCY SERVICES

## EVACUATION ASSEMBLY AREAS



## LEGEND

- Exit point
- Fire blanket
- Fire extinguisher
- Electric switchboard
- Evacuation route via front door
- Evacuation route via rear door

## EMERGENCY TONES

### ALERT TONE

WHEN ADVISED BY CHIEF FIRE WARDEN  
STANDBY FOR FURTHER ANNOUNCEMENTS

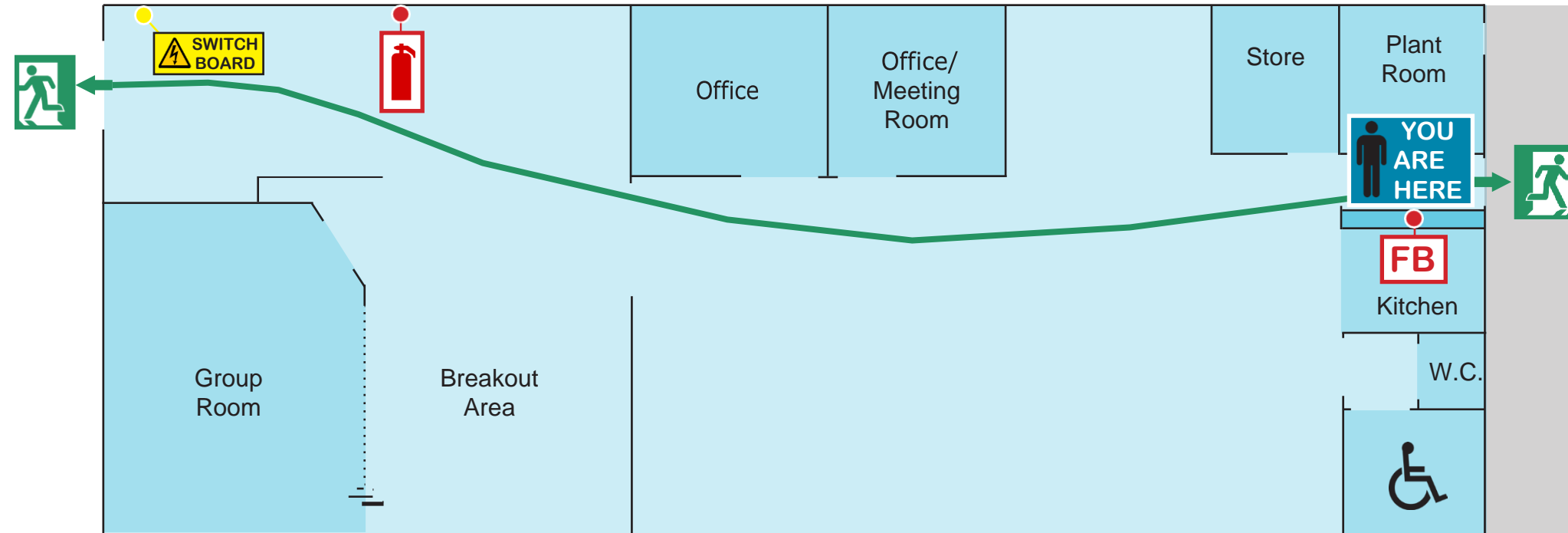
### EVACUATION TONE

WHEN ADVISED BY CHIEF FIRE WARDEN  
COMMENCE EVACUATION

# EVACUATION DIAGRAM



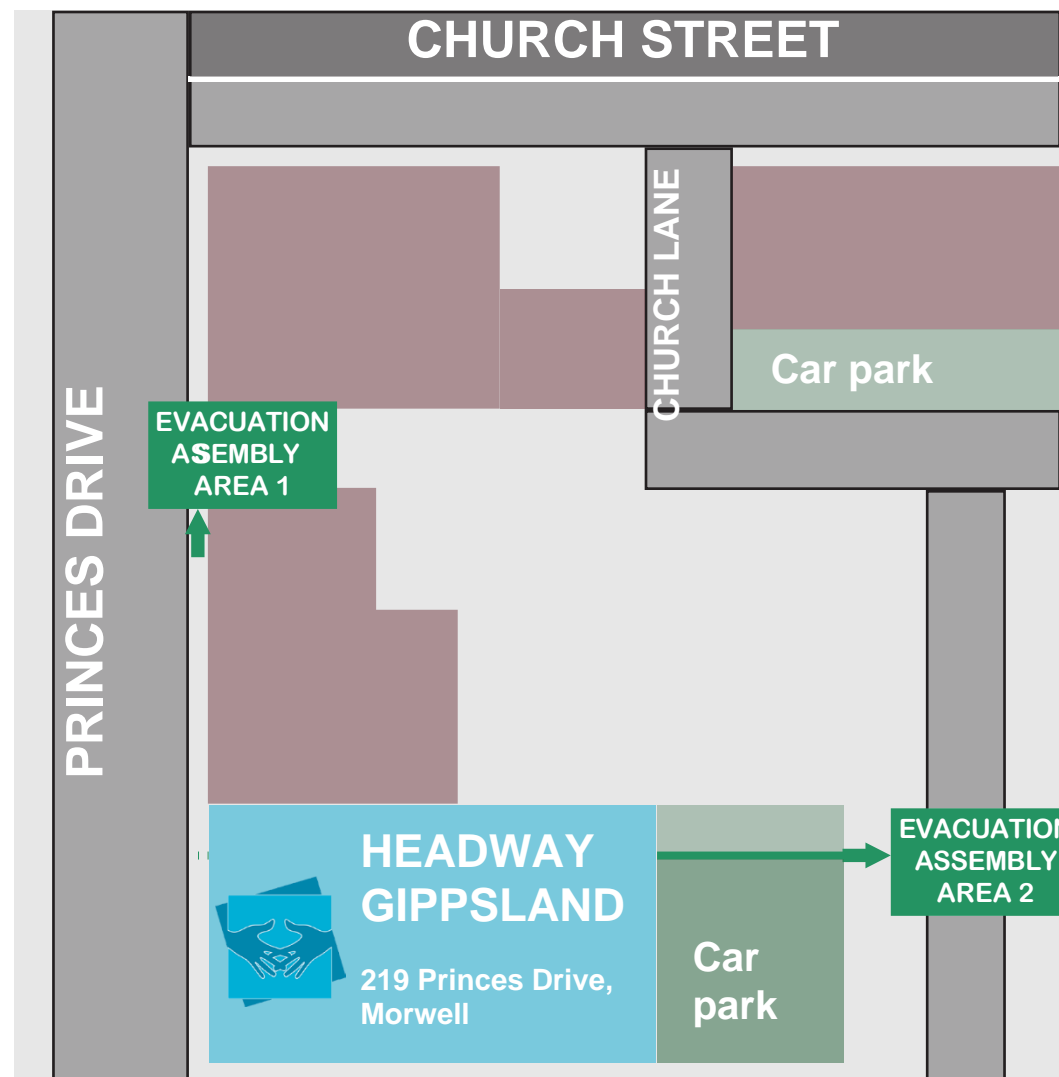
**Headway Gippsland**  
219 Princes Drive  
Morwell, VIC 3840



## EMERGENCY PROCEDURES

- 1** RAISE THE ALARM, NOTIFY NEARBY OCCUPANTS  
**PHONE 000**
- 2** ASSIST ANY PERSON IN DANGER  
**IF IT IS SAFE TO DO SO**
- 3** MOVE TO THE NEAREST SAFE  
**EVACUATION ASSEMBLY AREA**
- 4** REMAIN AT THE  
**EVACUATION ASSEMBLY AREA**  
REPORT ANYONE MISSING TO THE CHIEF WARDEN OR RESPONDING EMERGENCY SERVICES

## EVACUATION ASSEMBLY AREAS



## LEGEND

- Exit point
- Fire blanket
- Fire extinguisher
- Electric switchboard
- Evacuation route via front door
- Evacuation route via rear door

## EMERGENCY TONES

### ALERT TONE

WHEN ADVISED BY CHIEF FIRE WARDEN  
STANDBY FOR FURTHER ANNOUNCEMENTS

### EVACUATION TONE

WHEN ADVISED BY CHIEF FIRE WARDEN  
COMMENCE EVACUATION